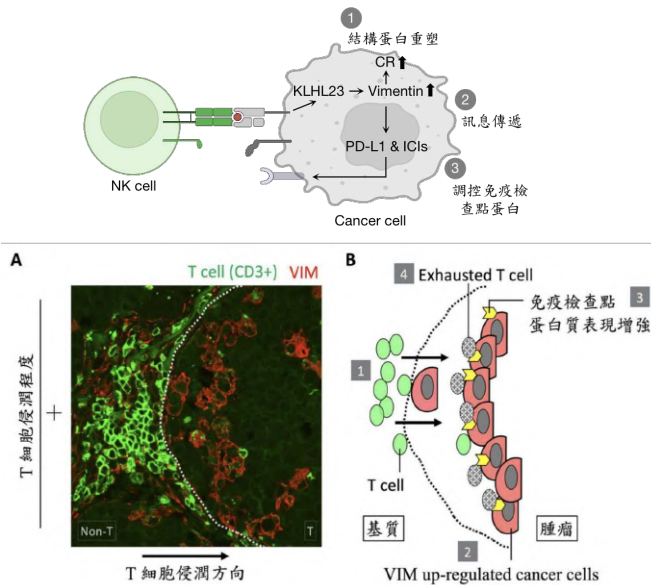


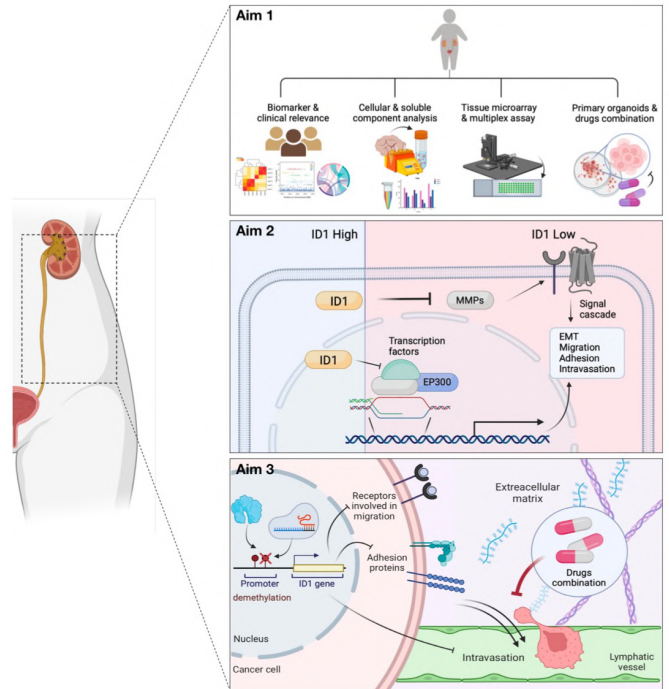


Tumor Immune Resistance



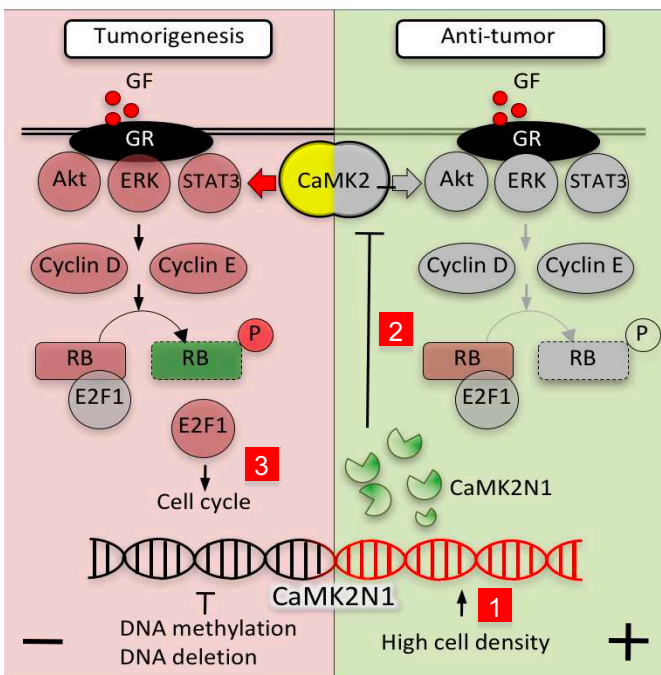
In immune-resistant tumors, T lymphocytes can bind to cancer cells via specific adhesion proteins on the membrane surface. This can activate vimentin and PD-L1 signaling pathways, which may lead to T cell exhaustion.

UTUC LVI Biomarkers



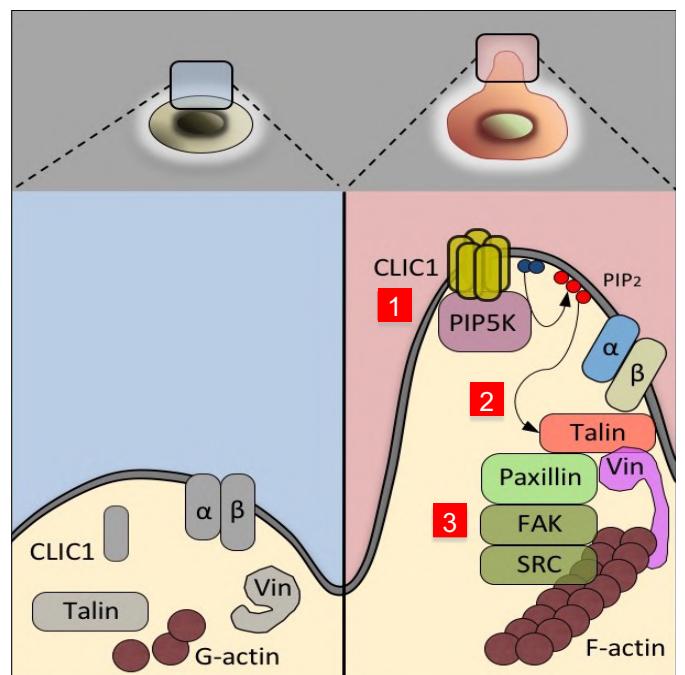
Identification of biomarkers for lymphatic vascular invasion in UTUC.

Anti-Tumorigenesis



Evasion of growth suppression during cell proliferation is essential for tumor initiation. Defects of CAMK2N1 resists growth suppression and promotes hepatocellular carcinogenesis through E2F mediated cell cycle.

Metastasis



Overcome of blood flow is a key step for metastatic seeding of cancer cells to distant organs. CLIC1 steers cells anchorage and extravasation through PIP5K-Talin-ITG pathway, which is required for tumor metastasis.